

Installation Instructions

Jackson Stoneworks Granite Vanity Top SOS Selling Center 321 POD Display Panel

You Will Need:

Two 1/2" Machine Screws



Phillips Head Screwdriver



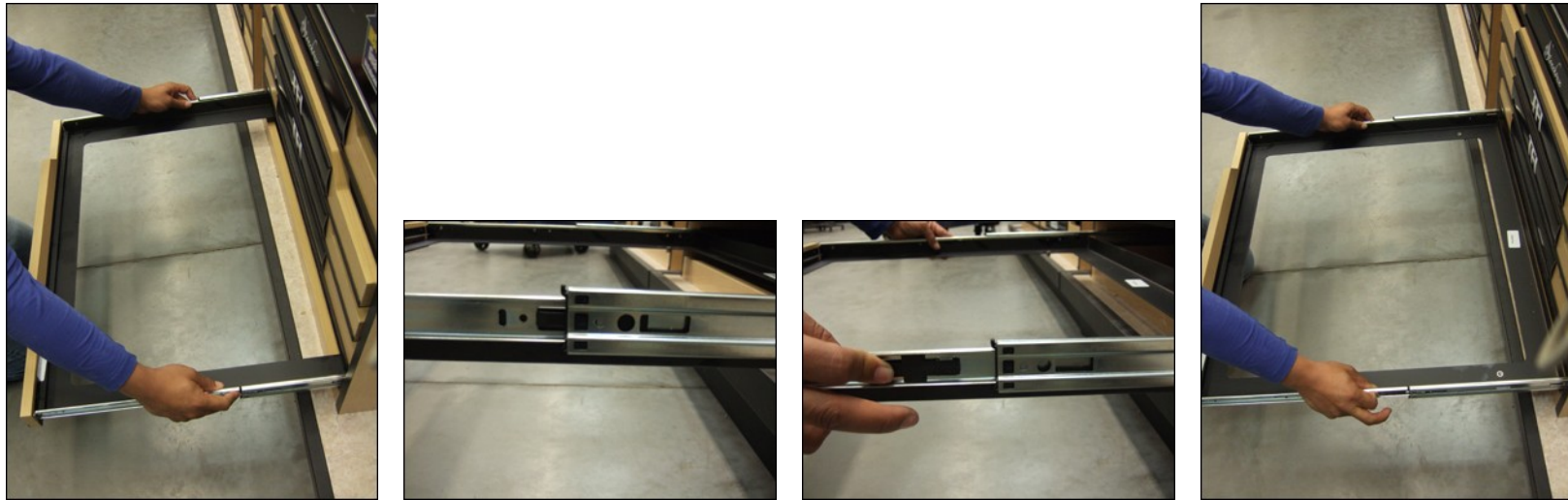
Jackson Stoneworks Granite Vanity
Top 321 POD Display



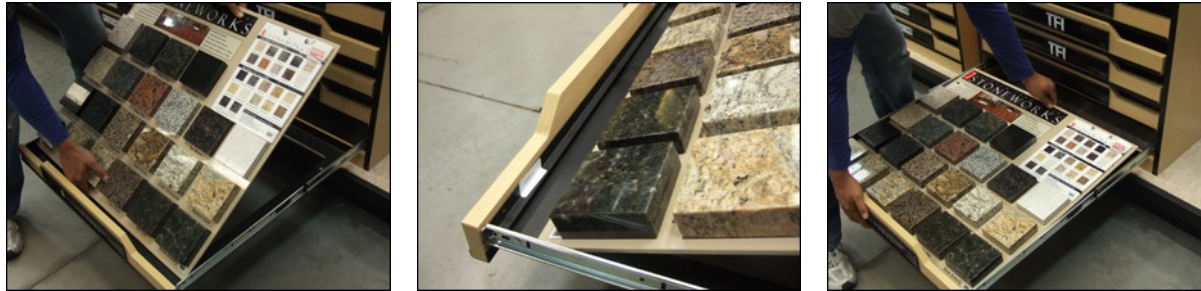
1. Locate **Vanity Top** Selling Center
2. Identify “**Granite & Marble**” POD



3. Slide open **Drawer 5** of the POD display;
press tabs on both sides; pull to extend the drawer allowing for installation of display



4. Place **Jackson Stoneworks Display** into Drawer 5.
Slide the front edge under the lip inside front of drawer, and lower into place



5. Align pre-drilled mounting holes on display with threaded inserts on drawer and **install screws**



6. Close completed drawer and insert **Jackson Stoneworks logo placard** into display slot

J A C K S O N I N D U S T R I E S
STONEWORKS

1111 SE 22nd Avenue, Gainesville, FL 32641 | Tel: 352.372.6600 | Fax: 352.372.6002 | www.jacksonstoneworks.com

